



7629 Falls Creek Lane

Specifications:

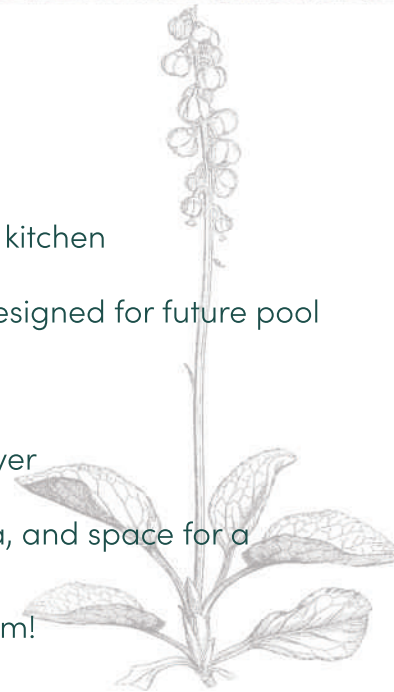
1.86 ac Homesite
4,985 Sq.ft.
4 Bedrooms
5.5 Baths



Rear elevation

Features:

- Open-plan family, dining, and gourmet kitchen
- Adjacent covered porch w/ fireplace, designed for future pool
- Vast, private, first floor owner's suite
- Downstairs guest suite with separate foyer
- Large mudroom, separate laundry area, and space for a dog wash
- Upstairs rec room and bonus game room!



ShinleafLiving.com



JOHN YOUNG 919.271.8820

LESLIE YOUNG 919.280.5401

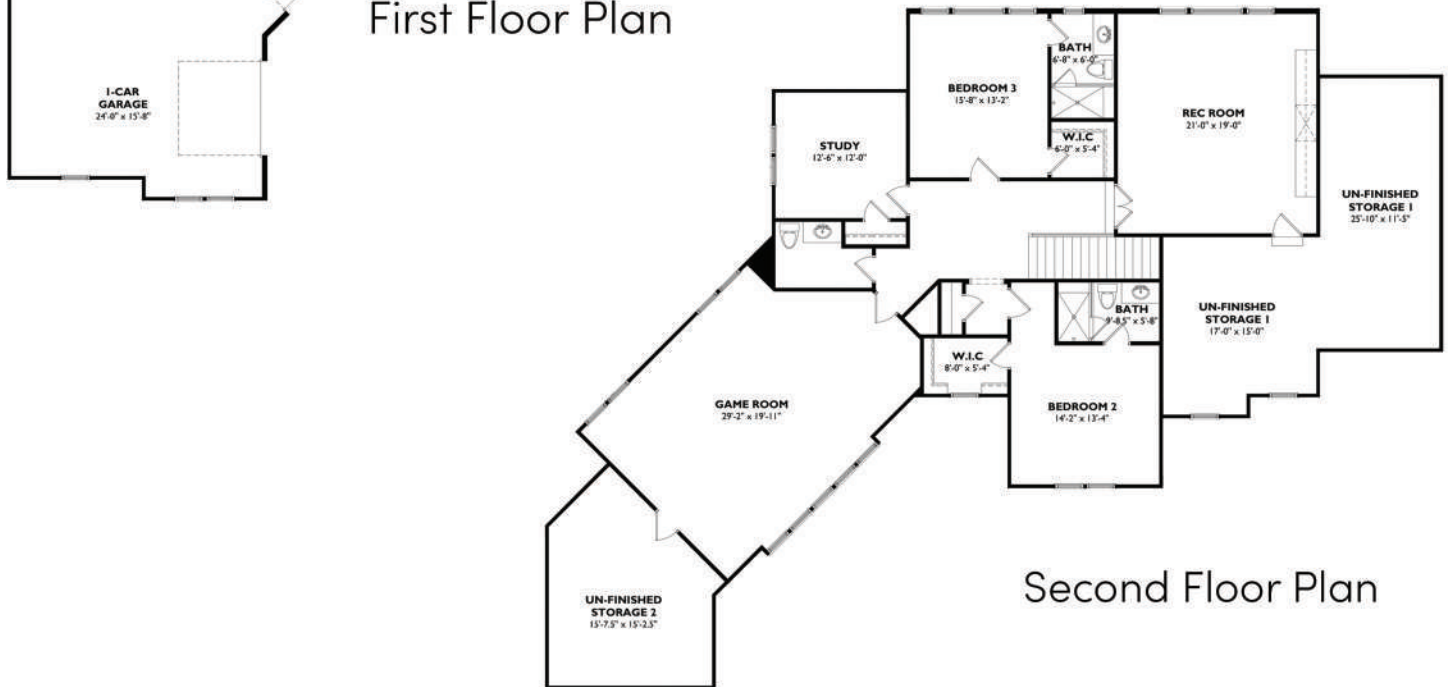


COLDWELL BANKER
HOWARD PERRY
AND WALSTON

BY APPOINTMENT ONLY



First Floor Plan



Second Floor Plan

