



7644 Falls Creek Lane

Specifications:

- .93 ac Homesite
- 5,240 Sq.ft.
- 5 Bedrooms
- 4.5 Baths



Rear elevation

Features:

- Open-plan family, dining, and gourmet kitchen
- Adjacent outdoor living w/ fireplace
- Luxurious first floor master & guest suites
- Expansive upstairs media & game room
- 3-car garage
- Designed for future pool



ShinleafLiving.com



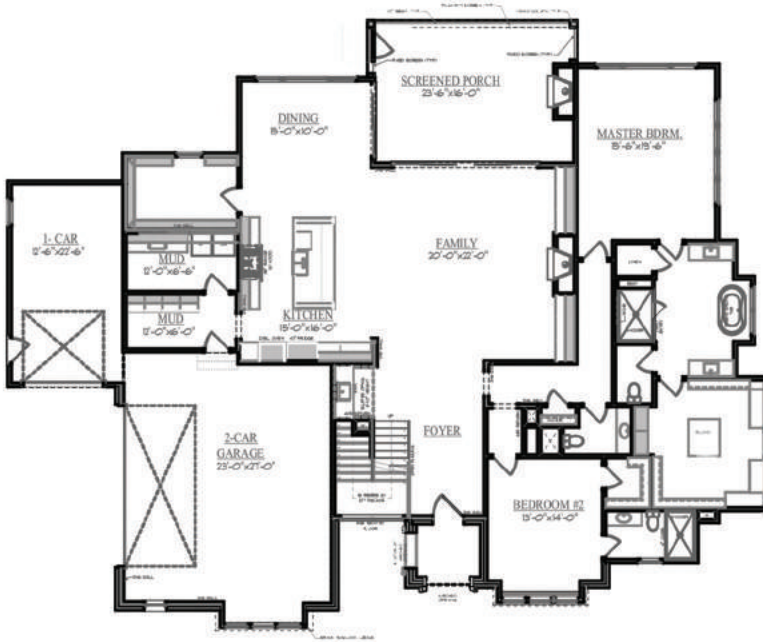
JOHN YOUNG 919.271.8820

LESLIE YOUNG 919.280.5401



COLDWELL BANKER
HOWARD PERRY
AND WALSTON

BY APPOINTMENT ONLY



First Floor Plan



Second Floor Plan



The builder reserves the right to revise noted specifications or substitute features, architectural details or materials. Illustrations and floorplans are for discussion purposes only and not part of a legal contract. Room sizes are approximate. Price, features, specifications, plans and elevations are subject to change without notice.